



Substantial improvement of histopathological diagnosis by whole-slide image-based remote consultation

Shizu Shinohara¹ · Andrey Bychkov² · Jijgee Munkhdelger² · Kishio Kuroda¹ · Han-Seung Yoon¹ · Shota Fujimura¹ · Kazuhiro Tabata¹ · Bungo Furusato¹ · Daisuke Niino¹ · Shinpei Morimoto¹ · Takashi Yao³ · Tomoo Itoh⁴ · Hajime Aoyama⁵ · Naoko Tsuyama⁶ · Yoshiki Mikami⁷ · Toshitaka Nagao⁸ · Tohru Ikeda⁹ · Noriyoshi Fukushima¹⁰ · Oi Harada² · Takako Kiyokawa¹¹ · Naoki Yoshimi⁵ · Shinichi Aishima¹² · Ichiro Maeda¹³ · Ichiro Mori¹⁴ · Koji Yamanegi¹⁵ · Koichi Tsuneyama¹⁶ · Ryohei Katoh¹⁷ · Miki Izumi¹⁸ · Yoshinao Oda¹⁹ · Junya Fukuoka¹

Received: 6 November 2021 / Revised: 11 March 2022 / Accepted: 5 April 2022 / Published online: 7 June 2022
© The Author(s), under exclusive licence to Springer-Verlag GmbH Germany, part of Springer Nature 2022

Abstract

Consultation by subspecialty experts is the most common mode of rendering diagnosis in challenging cases in pathological practice. Our study aimed to highlight the diagnostic benefits of whole-slide image (WSI)-based remote consultation. We obtained diagnostically challenging cases from two institutions from the years 2010 and 2013, with histological diagnoses that contained keywords “probable,” “suggestive,” “suspicious,” “inconclusive,” and “uncertain.” A total of 270 cases were selected for remote consultation using WSIs scanned at 40×. The consultation process consisted of three rounds: the first and second rounds each with 12 subspecialty experts and the third round with six multi-expertise senior pathologists. The first consultation yielded 44% concordance, and a change in diagnosis occurred in 56% of cases. The most frequent change was from inconclusive to definite diagnosis (30%), followed by minor discordance (14%), and major discordance (12%). Out of the 70 cases which reached the second round, 31 cases showed discrepancy between the two consultants. For these 31 cases, a consensus diagnosis was provided by six multi-expertise senior pathologists. Combining all WSI-based consultation rounds, the original inconclusive diagnosis was changed in 140 (52%) out of 266 cases. Among these cases, 80 cases (30%) upgraded the inconclusive diagnosis to a definite diagnosis, and 60 cases (22%) changed the diagnosis with major or minor discordance, accounting for 28 cases (10%) and 32 cases (12%), respectively. We observed significant improvement in the pathological diagnosis of difficult cases by remote consultation using WSIs, which can further assist in patient healthcare. A post-study survey highlighted various benefits of WSI-based consults.

Keywords Digital pathology · Telepathology · Whole-slide imaging · Second opinion · Consultation

✉ Junya Fukuoka
fukuokaj@nagasaki-u.ac.jp

¹ Department of Pathology, Graduate School of Biomedical Sciences, Nagasaki University, 1-7-1, Sakamoto, Nagasaki 852-8501, Japan

² Kameda Medical Center, Kamogawa, Japan

³ Juntendo University, Tokyo, Japan

⁴ Kobe University, Kobe, Japan

⁵ University of Ryukyus, Okinawa, Japan

⁶ Japanese Foundation for Cancer Research, Tokyo, Japan

⁷ Kumamoto University Hospital, Kumamoto, Japan

⁸ Tokyo Medical University, Tokyo, Japan

⁹ Tokyo Medical and Dental University, Tokyo, Japan

¹⁰ Jichi Medical University, Shimotsuge, Japan

¹¹ The Jikei University School of Medicine, Tokyo, Japan

¹² Saga University, Saga, Japan

¹³ Kitasato University School of Medicine, Sagami-hara, Japan

¹⁴ International University of Health and Welfare, Narita, Japan

¹⁵ Hyogo College of Medicine, Nishinomiya, Japan

¹⁶ Tokushima University Graduate School of Science, Tokushima, Japan

¹⁷ Ito Hospital, Tokyo, Japan

¹⁸ Showa University, Tokyo, Japan

¹⁹ Kyushu University, Fukuoka, Japan

Introduction

With the growing significance of pathological diagnosis in recent years, semi-personalized medicine, based on histopathological diagnosis and molecular profiling, has become a basic strategy for treating cancer and other intractable diseases.

As pathological diagnosis is the gold standard for cancer diagnosis, pathologists are expected to possess a wide range of knowledge and constantly be up to date with clinical advancements. Accurate diagnosis in every specialty area has become an increasingly difficult task for individual pathologists. Therefore, many institutions have run trials to create a system of double-checking by experts, which has shown improved diagnostic accuracy [1].

However, not all hospitals have the capacity to build an in-house framework encompassing all areas of expertise; therefore, case consultations are sent out for external expert opinions. This relatively time-consuming process requires sectioning and staining by lab technicians, creating a clinical information summary, obtaining macroscopic and radiological imaging data, writing a consultation letter, and mailing glass slides. Since the whole process could take at least 1 week, it is common practice that such external consultations are only utilized for limited cases, which, in a retrospective study by Cook et al., was expected to be 0.35–0.56% [2].

Digital pathology is a rapidly growing field internationally [3]. A whole-slide image (WSI) produced by scanning of glass slide is a core element of digital pathology. Digital transition requires an advanced laboratory infrastructure and allows for multiple tasks in pathology, from education and research to clinical uses, such as primary diagnosis, intraoperative consultation, telecytology, and multidisciplinary team discussions [4–6]. With recent advancements in digital pathology [5], it has become easier to obtain external consultations by avoiding cumbersome steps [3, 7]. In addition to the validation of primary diagnosis by WSI [8–10], multiple studies comparing the accuracy of consultations using WSI with those using glass slides have shown high agreement rates, suggesting potential widespread use of remote consultation in the future [8, 11–13]. This trend has been accelerated by the COVID-19 pandemic, during which digital pathology has proved to be key to maintaining clinical and academic activities in pathology departments [14, 15].

Currently, in some European and Asian (e.g., Japan) countries, consultations are not included in medical insurance coverage and are performed without compensation. Any related costs, such as additional staining, are covered by the consultant's institute. This is because of the lack of data demonstrating how much external consultations

improve diagnostic accuracy [16–19]. There is an urgent need for scientific evidence that consultation based on WSI improves diagnostic accuracy, which may promote further regulation amendments on a broad scale.

This study aimed to elucidate whether external WSI-based consultations of diagnostically difficult cases improve the accuracy of histopathological diagnosis.

Materials and methods

A two-step study was designed, wherein the first step investigated the number of inconclusive diagnostically difficult cases in participating institutions, and the second examined the degree of improvement in diagnostic accuracy after sending them out for expert consultations. The research protocol was approved by the ethical committee of Nagasaki University (#17,051,513).

First step: investigating the frequency of diagnostically difficult cases

Although external consultations are available for cases that are difficult to diagnose, there is no clear definition of what constitutes a *diagnostically difficult case* in histopathological practice. In this study, diagnostically difficult cases were defined as cases with an *inconclusive diagnosis*, usually indicated by words such as “suspicious,” “uncertain,” “probable,” “suggestive,” and “inconclusive” in the diagnostic line [20]. The frequency of such cases was investigated at two independent institutions: Nagasaki University Hospital (academic facility with 800 beds) and Awaji Medical Center (community hospital with 450 beds). We set two study periods, 2010 (January to December) and 2013 (January to December), during which different pathologists were responsible for diagnosis. All histopathological cases from the two study periods were screened in the laboratory information system, to identify diagnostically difficult cases as per the above definition.

Second step: expert consultation and evaluation of diagnostic agreement

A total of 30 pathologists, including 24 expert pathologists and six senior consultant multi-expertise pathologists from academic institutions, were involved in this study. A subspecialty expert was defined as a board-certified pathologist with more than 10 years of expertise in the field and a core member of the national subspecialty society or working group under the Japanese Society of Pathology. A senior consultant was defined as a board-certified pathologist with more than 25 years of expertise, practicing in the academic

setting, and regularly performing sign-out of general pathology cases from various specialties.

Among the 1018 cases extracted during step 1, 30 were randomly selected from each of the following nine subspecialties: hematopathology, dermatopathology, gastrointestinal, hepato-pancreatico-biliary, genitourinary, gynecological, breast, head and neck, and bone and soft tissue pathology (270 total cases). The initial quality control check aimed in excluding cases suboptimal for evaluation (i.e., faded stain) and replacing those with another diagnostically difficult case from the same subspecialty. Data on the patient's age, sex, sampled organ, clinical diagnostic data, and original pathological diagnosis were collected. After anonymization, all the archival slides belonging to the cases, including immunostains, were provided new labels and were converted to WSI by scanning at 40× with a Philips Ultrafast Scanner® (Philips, Amsterdam, Netherlands). Scanned images were stored on a secure, firewall-protected, demilitarized zone server (DMZ; Philips) and assigned to subspecialty experts. Each expert could access and view their WSIs via the Philips IMS Viewer using their user ID and password.

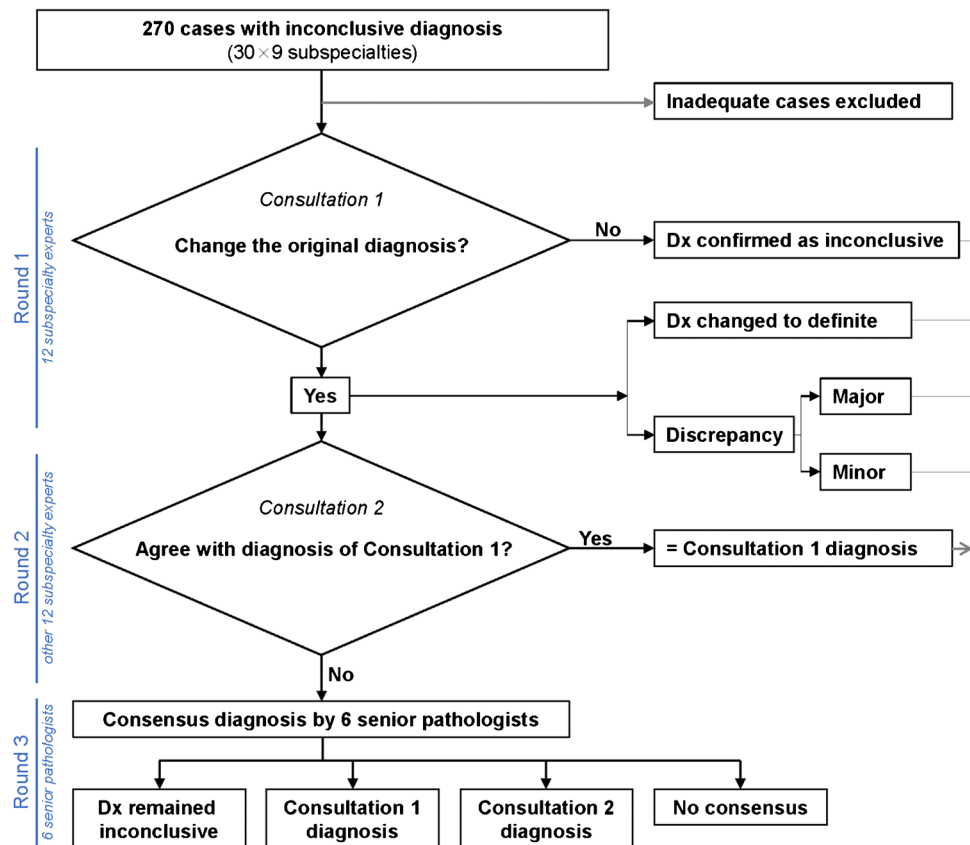
The consultation process consisted of one to three rounds, depending on the decisions made at each level, as shown in the study flowchart (Fig. 1). Twelve experts reviewed 270 cases to classify them into four categories,

as per our previous nationwide study [10]. These categories were as follows: (1) agree with the initial inconclusive diagnosis, (2) agree, but change the diagnosis to definite by removing uncertain vocabulary from the diagnostic line, (3) change the diagnosis to require different treatments (defined as “major discrepancy”), and (4) change the diagnosis, but the treatment approach is not affected (defined as “minor discrepancy”).

Cases in the major and minor discrepancy groups were sent to a second round of subspecialty experts, who reported whether they agreed with the original or the expert diagnosis. If the second expert gave a diagnosis discordant with the first expert, by either agreeing with the original inconclusive diagnosis or disagreeing with both the original and first expert diagnoses, the case was further assigned to six senior consultant pathologists. These third-round experts were asked to select whether they agreed with the first expert, the second expert, or neither experts. The consensus of the six senior consultants was obtained by a majority vote, and it was recorded as the final diagnosis (Fig. 1).

The percentages of diagnostic change were calculated, and their confidence intervals were computed using the Wilson score interval. Statistical analyses were performed using the JMP SAS, version 13.0.0 (SAS Institute, Cary, NC, USA).

Fig. 1 Flowchart of the study



Results

The rate of diagnostically difficult cases

Table 1 shows the distribution of inconclusive diagnoses at Nagasaki University Hospital and Awaji Medical Center in 2010 and 2013. The rate of inconclusive diagnosis at the Nagasaki University Hospital was 5.7% (2010) and 3.1% (2013). After the implementation of a default double-check system in 2013, the inconclusive diagnosis rate considerably decreased. At Awaji Medical Center, the inconclusive diagnosis rate was 1.2% and 5.4% in 2010 and 2013, respectively.

Table 1 Prevalence of cases with inconclusive diagnoses

Year	Nagasaki University Hospital		Awaji Medical Center	
	2010	2013	2010	2013
Total histopathological diagnoses, <i>n</i>	8301	8828	4267	4101
Total pathologists, <i>n</i>	9	13	1	2
Default double-check system	No	Yes	No	No
Number of inconclusive diagnoses, <i>n</i>	471	274	53	220
Rate of inconclusive diagnosis, %	5.7%	3.1%	1.2%	5.4%

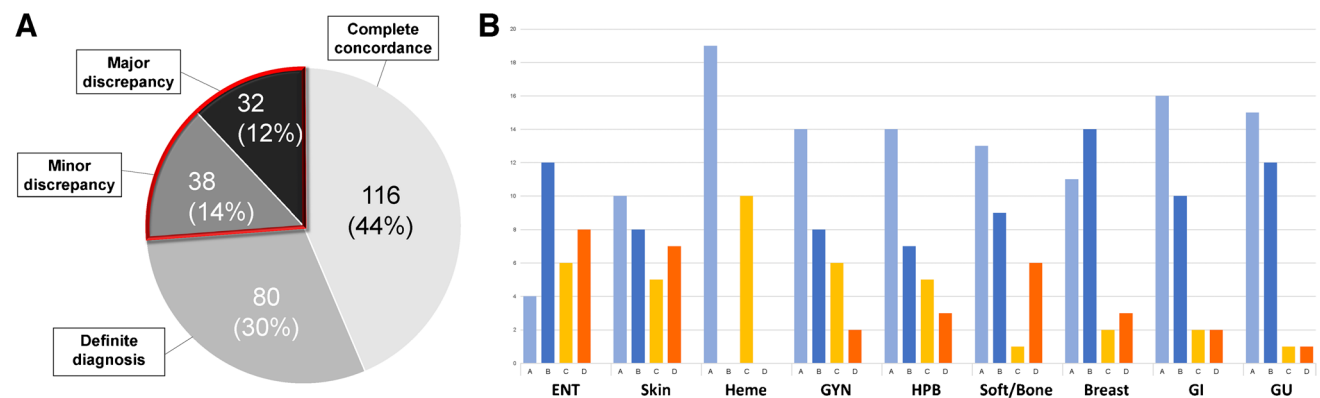


Fig. 2 Results of the first expert consultation. **A** Diagnosis after the first round of expert consultation. Cases with diagnostic discrepancy (enclosed in red) were further sent for a second consultation. **B** Change of diagnosis by subspecialty. a, agreement with the original diagnosis; b, changed to definite concordant diagnosis; c, minor discrepancy; d, major discrepancy. Y-axis indicates the number of cases. ENT: ear, nose, and throat (i.e., head and neck); Heme: hematopathology; GYN: gynecological; HPB: hepato-pancreatico-biliary; soft/bone: soft tissue and bone; GI: gastrointestinal; GU: genitourinary

Consultation by subspecialty experts (rounds 1 and 2)

Among the initially selected 270 diagnostically difficult cases, four were excluded due to missed slides with immunostaining.

Out of the total 266 inconclusive diagnoses, the original diagnosis was not changed in 116 (44%) cases, while 150 (56%) cases received a change of diagnosis by the first expert (Fig. 2A). Among these 150 cases, 80 (53%) were changed from an inconclusive to a definite diagnosis. The remaining 70 (47%) cases showed diagnostic discrepancies, wherein 38 cases showed minor diagnostic discrepancies, accounting for 14% of the total and 25.3% of corrected cases. Major discrepancies ($n=32$) accounted for 12% of the total and 21.3% of the corrected cases.

Certain trends among the nine subspecialties were noted after the first consultation (Fig. 2B). The highest rate of diagnostic change from inconclusive to definite was found in breast pathology, with 14 cases (47%), followed by the head and neck and genitourinary subspecialties with 12 cases (40%) each. The occurrence of major discrepancy was highest in the head and neck area with 8 cases (27%), followed by 7 dermatopathology cases (23%) and 6 bone and soft tissue cases (21%). The highest number of minor disagreement rate cases was found in hematology with 10 cases (34%), followed by head and neck and gynecology with six cases (20%) each. After combining major and minor discrepancies, the disagreement rate remained the highest in the head and neck group (47%, 14 cases), followed by dermatopathology (40%, 12 cases), hepato-pancreatico-biliary (28%, 8 cases), and gynecology (27%, 8 cases). The disagreement rate was lowest in urology (7%, 2 cases), followed by the gastrointestinal subspecialty (13%, 4 cases).

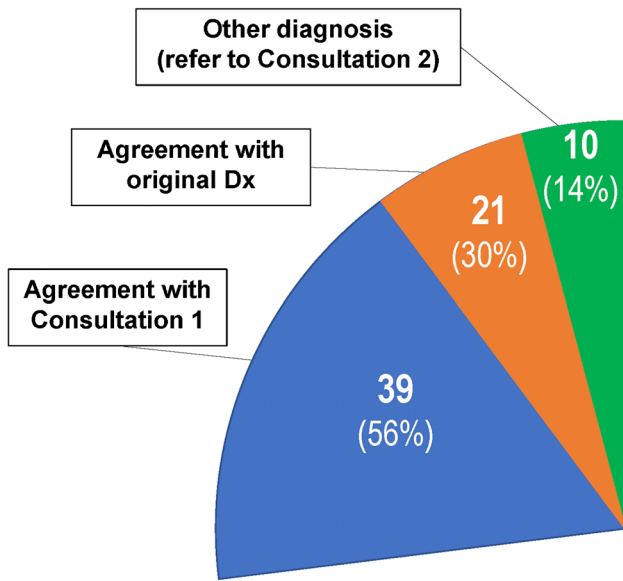


Fig. 3 Results of the second expert consultation. Diagnostic agreement on cases with major and minor discrepancies detected in the first round of consultation. The pie chart corresponds to the diagnostically discrepant cases shown as an area enclosed in red in Fig. 2A

Cases labeled as major and minor discrepancies (26% of total cases) were further sent to 12 experts for consultation. Second-round experts agreed to the first consultation in 39 cases (56%) and agreed to the original diagnosis in 21 cases (30%) (Fig. 3). Additionally, in 10 cases (14%), the second-round experts disagreed with both the original and the first consultation diagnosis, for which new diagnoses were provided.

Consultation by senior multi-expertise pathologists (round 3)

Six senior consultant pathologists reviewed 31 cases, in which the first and second consultation results were discordant (Fig. 4, Table 2; WSIs accessible via <https://t.ly/QIWu>). The senior consultants agreed with the first consultation diagnosis in 19 cases (61%), the original diagnosis in eight cases (26%), the second consultation diagnosis in two cases (6%), and for two cases no consensus was reached. Only three cases (9.6%) showed complete agreement by all six senior pathologists, reaffirming the fact that they were indeed difficult to diagnose.

The analysis of these diagnoses revealed that the highest rate of disagreement (14/31, 45.2%) occurred due to diverse interpretations among pathologists. Seven of these cases were borderline cases, in which it was difficult to differentiate between two diagnoses, for example, atypical vs. malignant cells or grade 1 vs. grade 2 neuroendocrine tumors. Other reasons for disagreements included requirement of

Case	Pathologist						consensus
	1	2	3	4	5	6	
1	A	B	A	B	B	D	B
2	A	B	B	B	B	B	B
3	A	B	B	A	B	B	B
4	B	B	B	B	B	B	B
5	C	B	C	A	A	C	C
6	A	B	B	A	A	D	A
7	D	B	B	B	A	A	B
8	D	A	A	B	A	D	A
9	B	A	B	B	A	B	B
10	A	A	A	A	B	D	A
11	B	B	B	B	B	D	B
12	C	A	B	C	B	B	B
13	A	D	C	C	A	A	A
14	B	D	B	A	B	D	B
15	A	D	B	A	A	D	A
16	B	C	B	B	A	A	B
17	B	D	A	C	C	C	C
18	B	D	B	A	D	D	B
19	B	D	B	B	A	A	B
20	B	A	B	B	A	B	B
21	B	D	C	B	A	D	B
22	D	D	D	D	A	D	E
23	B	B	B	A	A	B	B
24	A	A	A	B	A	B	A
25	A	B	A	A	A	A	A
26	B	D	B	B	B	D	B
27	B	B	B	B	B	B	B
28	B	B	B	B	B	B	B
29	A	B	B	A	A	B	E
30	B	B	B	A	B	B	B
31	A	D	A	D	A	D	A

Fig. 4 The result of round 3 consultation on the cases discordant between the previous two rounds. Diagnosis of all 31 cases by six senior pathologists. **a**, agreement with the original diagnosis; **b**, agreement with the first consultant; **c**, agreement with the second consultant; **d**, different diagnosis; **e**, no consensus

multidisciplinary team discussion (6/31, 19.4%), insufficient immunohistochemical workup (4/31, 12.9%), lack of diagnostically significant clinical information (3/31, 9.7%), sampling error (3/31, 9.7%), and a morphologically unusual case (1/31, 3.2%).

Combining the second and third round consultant agreements, from a total of 70 cases with diagnostic discrepancies, 58 cases (83%) showed agreement with the first consultant diagnosis and two cases (3%) with the second (Fig. 5). Eight cases (11%) showed agreement with the original diagnosis, and two cases had no consensus diagnosis. Overall, out of 70 cases, 60 cases were considered cases with major or minor diagnostic discrepancies.

Summary of all consultation rounds

After consultation rounds 1–3, the original inconclusive diagnosis was changed for 140 out of the 266 cases, accounting for 52% of the total diagnostically difficult cases. Among these cases, 80 cases (30%) reversed the inconclusive diagnosis to a definite diagnosis, and 60 cases (22%) changed the diagnosis with a minor (32 cases, 12%) or major (28 cases,

Table 2 Summary of 31 cases submitted to round 3 of consultation (WSIs accessible via <https://t.ly/Q1Wu>)

##	Original diagnosis	Round 1 diagnosis	Round 2 diagnosis	Consensus
Hepato-pancreatico-biliary				
1	Suspicious for drug induced liver injury	Unremarkable liver tissue	Suspicious for drug induced liver injury	Round 1
2	Suspicious for PBC/AIH overlap syndrome	Primary biliary cholangitis	Suspicious for PBC/AIH overlap syndrome	Round 1
3	Suspicious for PBC/AIH overlap syndrome	Primary biliary cholangitis	Suspicious for PBC/AIH overlap syndrome	Round 1
4	Probable hyperplastic nodule	FNH vs. adenoma vs. HCC	Probable hyperplastic nodule	Round 1
5	NET, probably grade 2	NET vs. acinar cell carcinoma	NET, grade 1	Round 2
Hematopathology				
6	Suspicious for MDS	Hypercellular marrow with erythroid hyperplasia	Suspicious for MDS	Original
7	Suspicious for MDS	Normocellular marrow with immature cells	Suspicious for MDS	Round 1
8	Suspicious for PTCL	Normocellular marrow with gelatinous exudates	Suspicious for PTCL	Original
9	Probable residual leukemia	Hypocellular marrow with immature cells	Probable residual leukemia	Round 1
10	Probable PTCL	Hypercellular marrow with hemophagocytosis	Probable PTCL	Original
Soft tissue and bone				
11	Suspicious for dentigerous cyst	Unicystic ameloblastoma	Suspicious for dentigerous cyst	Round 1
12	Probable undifferentiated pleomorphic sarcoma	Myxoid/round cell liposarcoma	Suggestive of dedifferentiated liposarcoma	Round 1
13	Suspicious for epithelioid hemangioendothelioma	Arteriovenous malformation	Suggestive of epithelioid hemangioma	Original
14	Suspicious for group atrophy	Myogenic atrophy	Suspicious for group atrophy	Round 1
15	Probable osteochondroma	Dystrophic calcification	Probable osteochondroma	Original
Gastrointestinal				
16	Probable adenocarcinoma	Adenocarcinoma vs. NET	Adenocarcinoma of fundic gland type	Round 1
17	Suspicious for low grade intraepithelial neoplasia	High grade intraepithelial neoplasia	Indefinite for neoplasia	Round 2
Head and neck				
18	Suspicious for laryngeal nodule	Squamous cell carcinoma	Suspicious for laryngeal nodule	Round 1
19	Probable squamous cell carcinoma	Intrathyroidal thymic carcinoma	Probable squamous cell carcinoma	Round 1
20	Suspicious for papillary thyroid carcinoma, arising in adenomatous goiter	Adenomatous goiter	Suspicious for papillary thyroid carcinoma, arising in adenomatous goiter	Round 1
21	Probable carcinoma ex-pleomorphic adenoma	Suspicious for myoepithelial carcinoma	Pleomorphic adenoma	Round 1
22	Suspicious for respiratory epithelial adenomatoid hamartoma	Suspicious for schwannoma	Suspicious for respiratory epithelial adenomatoid hamartoma	No
23	Suspicious for retention cyst	Suspicious for oncocytic sinonasal papilloma	Suspicious for retention cyst	Round 1
Genitourinary				
24	Suspicious for iatrogenic multiple submucosal granuloma	Residual urothelial carcinoma	Suspicious for iatrogenic multiple submucosal granuloma	Original
25	Probable reactive ureter mucosa	Suspicious for carcinoma	Probable reactive change	Original
Skin				
26	Suspicious for urticaria pigmentosa mastocytosis	Histiocytic tumor	Suspicious for urticaria pigmentosa mastocytosis	Round 1
27	Suspicious for paraneoplastic pemphigus	Suspicious for drug eruption	Suspicious for paraneoplastic pemphigus	Round 1
28	Probable PTCL	Lichenoid dermatitis and lichenoid folliculitis with atypical lymphocytes	Lichen planus-like keratosis	Round 1

Table 2 (continued)

##	Original diagnosis	Round 1 diagnosis	Round 2 diagnosis	Consensus
29	Lentigo simplex, probable Gynecological	Melanocytic nevus, junctional, lentiginous	Reactive melanocytic hyperplasia	No
30	Suspicious for adenocarcinoma	Glandular and stromal breakdown	Endometrial polyp with glandular and stromal breakdown	Round 1
31	Probable lichen sclerosis	Suggestive of seborrheic keratosis	Probable lichen sclerosis	Original

PBC primary biliary cholangitis
AIH autoimmune cholangitis
FNH focal nodular hyperplasia
HCC hepatocellular carcinoma
NET neuroendocrine tumor
MDS myelodysplastic syndrome
PTCL peripheral T cell lymphoma

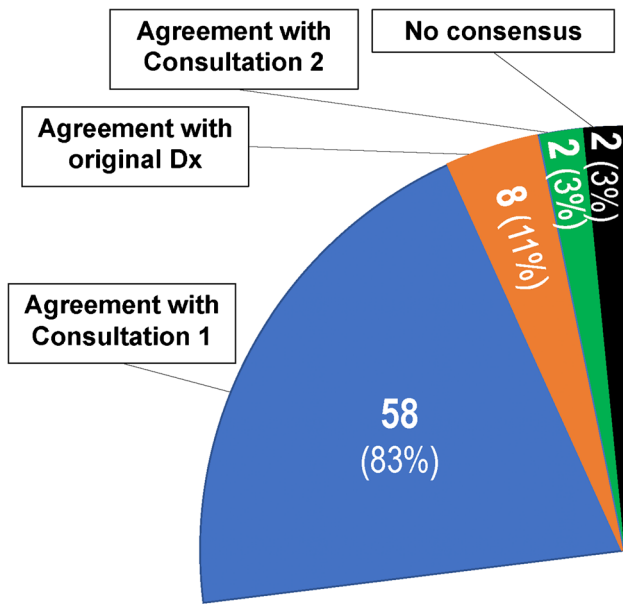


Fig. 5 The final diagnosis in 70 discordant cases identified in the first consultation round. The pie chart corresponds to the diagnostically discrepant cases shown as an area enclosed in red in Fig. 2A

10% disagreement to the original diagnosis (Fig. 6). There were two cases (1%) with no consensus diagnosis.

A survey on the utility of digital pathology for external consultation

After completing consultation rounds, all the experts were invited to participate in online survey using Google Forms (Google Inc, Mountain View, CA) and 25 respondents were able to provide their feedback.

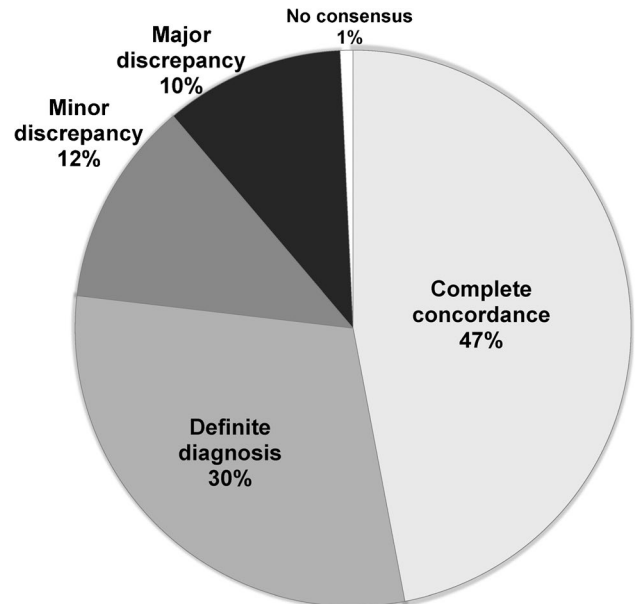


Fig. 6 Summary of all three rounds of expert consultation

The quality of WSIs used in the study was qualified as sufficient or nearly-sufficient for making diagnosis by the vast majority of experts (90%), irrespective of subspecialty. Furthermore, about 2/3 of pathologists mentioned that they did not experience problems while reviewed WSIs. Remaining experts noticed certain issues related to digital images, such as difficulty with recognizing fine details on high magnification, inability to perform precise focusing, and some technical difficulties related to slow image loading or out-of-focus areas.

Regarding the potential impact of telepathology on consultation practice, there was a major agreement that the digital approach may decrease the cost of the whole consultation

process (96%), shorten turnaround time (100%), and, ultimately, improve the quality of the final diagnosis (96%). Given that the WSI scanner is available in a laboratory, all the above benefits will definitely increase the number of consultations (100%). Most of the respondents indicated the convenience of digital mode for sending and receiving extradepartmental consults. Interestingly, while only 60% of experts regularly use digital pathology, there was no significant difference in scores between the two groups. Detailed answers are provided in the supplement.

Discussion

This study evaluated the impact of WSI-based expert consultation on inconclusive histopathological diagnoses and showed substantial improvement in diagnosis after remote second opinion.

In our series, approximately 5% of the total histopathological cases were considered diagnostically difficult, requiring expert consultation. In 2002, the College of American Pathologists (CAP) in a large-scale survey of consultation cases reported an extradepartmental consultation rate of 0.5% of all cases [21]; this lower percentage can be explained by the differences in methodology and definitions compared to our study. In addition, the CAP survey recorded cases that were sent out for consultation as glass slides and/or paraffin blocks, which is a mainstream approach but requires much more comprehensive logistics compared to digital consultations. Moreover, our study was specifically designed to evaluate the rate of cases with inconclusive diagnoses and not all of them would be sent out for extradepartmental consultation in a real-world scenario. Most institutions (95%) who participated in the CAP survey were from the USA [21], which has the largest number of pathologists (over 20,000) in the world [22], providing opportunities for easier access to subspecialty experts within the same institution. In contrast, our study results would be more applicable to mid-range laboratories of countries with relatively lower pathologist workforce.

Interestingly, CAP predicted the growth of consultation by about 29% in 2030 compared to 2010 [23]. More recently, several studies have confirmed the feasibility of WSI-based diagnosis [5, 10, 11, 24–26]; therefore, with the convenience and low-cost process of WSI-based consultation, the potential for expert consultation may increase in tandem with growing digital infrastructure [21]. Our team reported about the successful establishment of the multi-institutional digital pathology network with a broad range of subspecialty experts readily available for a second opinion via the online telecommunication system [27]. Our experience showed that in-house digital pathology integrated with the laboratory information system, electronic medical records, and further

automated with cloud-based consultation portal allows for efficient expert consultation [27, 28]. Well-established WSI-based workflow may overcome most of the difficulties associated with the traditional glass-based second opinion. This concept was further reinforced by survey conducted among 25 experts participated in our study, who shared common viewpoints that digital mode will decrease the cost of consultation, shorten turnaround time, and improve the diagnostic quality.

The difference in the percentage of extradepartmental consultations between the academic facility and the community hospital in our study was small. While the number of inconclusive diagnoses at Awaji Medical Center increased over time, Nagasaki University showed a decrease in inconclusive diagnoses. This could be explained by the implementation of a double-check system, also known as double reporting, which involves consulting a case to more than one pathologist from the same department prior to reporting the case [29].

Complete agreement after a consultation was found in less than half (47%) of diagnostically difficult cases, while 22% of the diagnoses were changed by consultants, resulting in major or minor discrepancies (Fig. 6). These numbers are in agreement with those reported on glass slides in the CAP survey, which encompassed 2,746 consultation cases, wherein the rate of complete agreement and change of original diagnosis were 54.6% and 27.7%, respectively [21]. Another important finding in our series was the high rate (30%) of diagnosis change from inconclusive to definite after consultation.

This study reports the first set of objective data indicating the degree of improvement in diagnostic accuracy after remote expert consultations using WSI. Consultations are not recognized as medical practices in Japan; therefore, there are no medical fees for expert consultations, and these services are often provided pro bono. Currently, only a limited number of cases undergo such consultations because of the complex process and lack of additional compensation. As the framework for outside consultation is being created by utilizing digital media such as WSI, it is our hope that expert consultations will soon be established as default, which may potentially impact up to 5% of routine cases that fall into the “difficult to diagnose” category. For example, by making projections from our study, a mid-volume histopathology laboratory with an annual load of 20,000 cases and without a default double-check system is estimated to have up to 1000 cases with an inconclusive diagnosis. Of these, approximately 300 cases could receive definite diagnosis by expert consultation (Fig. 6). Furthermore, additional 220 cases could be corrected from discrepant diagnosis, which will change the course of treatment in approximately 100 of these cases (10.5%), which is a significant impact. These estimates increase proportionally with a higher caseload.

In a recent study of diagnostic discrepancies between glass slides and WSI in challenging consultation cases, Bauer et al. (2013) found major and minor discrepancies in 0.9% and 3.7% cases, respectively [11]. A similar validation study of 1,070 diagnoses with WSI by the current authors found a major discrepancy rate of 0.9% and minor discrepancy rate of 3.5% [10]. The lower rate of diagnostic discrepancy in these two studies, compared to that of the present study, can be explained by the difference in scope and design of these studies. For instance, the main objective of the above two studies was to evaluate intra-observer variability between glass slides and WSI in unselected series. In contrast, the present study evaluated inter-observer variability specifically in challenging cases, using remote consultation by expert pathologists.

Major diagnostic discrepancies between primary and second opinion diagnoses ranged from 2.2 to 2.3% [30, 31]. These studies were performed in consecutive cases referred from other hospitals, which could explain the low rate of major discrepancy. In contrast, our study deliberately collected diagnostically difficult cases to measure the effect of expert consultation and showed a significant improvement in diagnostic accuracy. Interestingly, in the breast pathology field, a high rate of major discrepancy (11.4%) was reported [32] which is similar to our result. The levels of disagreement may differ by organ and disease category, such as neoplastic vs. non-neoplastic. For instance, Strosberg et al. (2018) reported that among malignancies, neuropathology (10.9% major and 41.3% minor discrepancies) and genitourinary (2.0% major and 30.7% minor discrepancies) cases had the highest number of disagreements [31]. However, in our cohort, dermatopathology followed by head and neck pathology showed the highest amount of disagreement. The proportion of non-neoplastic and neoplastic cases in our study was 27% and 73%, respectively.

This study had some limitations. The number of participating laboratories was limited; therefore, a smaller number of cases were evaluated for consultation compared to nationwide surveys [21]. In addition, there was a lack pulmonary/thoracic case among those sent for the consultation. The reason behind this is that both hospitals participated in the study are tertiary respiratory centers well equipped with expert pulmonary pathologists. Therefore, all the challenging lung cases during the study period were resolved on site either by consensus of in-house pulmonary pathology experts or with an additional input of multidisciplinary discussion. Another minor reason, which precluded us from enrolling lung cases, is that the international guidelines allow diagnostic terminology of “indeterminate” and “probable” for some entities among interstitial lung diseases, which could create a bias considering our definition of diagnostically difficult cases. From the technical point of view, we evaluated only one model of the scanner with the only default magnification

(40×). It is also important to note that, given the comprehensive design of the study, we did not aim to draw direct comparisons between WSI vs. glass slide evaluation.

Emphasizing the strengths of the study, this is the first investigation to clarify diagnostic improvement by remote digital consultation in collaboration with several experts, representing different subspecialties. Additionally, the employment of two levels of expert pathologist consultation and a third-level consultation with multi-expertise senior pathologists were instrumental in making the final diagnosis highly accurate.

With wide acceptance of remote consultation and the establishment of medical fees, it would be possible to create an environment for pathologists to make diagnoses without barriers such as compensation, timing, and location. Fully digitized, remote consultation diagnostic centers can benefit from this approach in the near future. In conclusion, we present a process of significant improvement in the pathological diagnosis of difficult cases by performing remote consultation by experts using WSI.

Supplementary Information The online version contains supplementary material available at <https://doi.org/10.1007/s00428-022-03327-2>.

Author contribution SS: data curation, formal analysis, investigation, methodology, writing-original, writing-review.

AB: data curation, formal analysis, investigation, methodology, writing-original, writing-review, and editing.

JM: data curation, formal analysis, investigation, methodology, writing-original, writing-review.

KK: formal analysis, investigation, writing-review.

HSY: formal analysis, investigation, writing-review.

SF: formal analysis, investigation, writing-review.

KTa: formal analysis, investigation, writing-review.

BF: formal analysis, investigation, writing-review.

DN: formal analysis, investigation, writing-review.

SM: formal analysis, investigation, writing-review.

TY: formal analysis, investigation, writing-review.

TI: formal analysis, investigation, writing-review.

HA: formal analysis, investigation, writing-review.

NT: formal analysis, investigation, writing-review.

YM: formal analysis, investigation, writing-review.

TN: formal analysis, investigation, writing-review.

Tik: formal analysis, investigation, writing-review.

NF: formal analysis, investigation, writing-review.

OH: formal analysis, investigation, writing-review.

TK: formal analysis, investigation, writing-review.

NY: formal analysis, investigation, writing-review.

SA: formal analysis, investigation, writing-review.

IMa: formal analysis, investigation, writing-review.

IMo: formal analysis, investigation, writing-review.

KY: formal analysis, investigation, writing-review.

KTs: formal analysis, investigation, writing-review.

RK: formal analysis, investigation, writing-review.

MI: formal analysis, investigation, writing-review.

YO: formal analysis, investigation, writing-review.

JF: conceptualization, data curation, formal analysis, investigation, methodology, project administration, validation, writing-original, review, and editing.

All authors have read and approved the manuscript.

Funding This study was supported by a grant from the Japan Agency of Medical Research Development.

Declarations

Ethics approval This study was approved by the Ethical Committee of Nagasaki University (#17051513).

Conflict of interest The authors declare no competing interests.

References

- Abt AB, Abt LG, Olt GJ (1995) The effect of interinstitution anatomic pathology consultation on patient care. *Arch Pathol Lab Med* 119(6):514–517
- Cook IS, McCormick D, Poller DN (2001) Referrals for second opinion in surgical pathology: implications for management of cancer patients in the UK. *Eur J Surg Oncol* 27(6):589–594. <https://doi.org/10.1053/ejs.2001.1150>
- Cucoranu IC, Parwani AV, Vepa S, Weinstein RS, Pantanowitz L (2014) Digital pathology: A systematic evaluation of the patent landscape. *J Pathol Inform* 5(1):16. <https://doi.org/10.4103/2153-3539.133112>
- Hanna MG, Parwani A, Sirintrapun SJ (2020) Whole Slide Imaging: Technology and Applications. *Adv Anat Pathol* 27(4):251–259. <https://doi.org/10.1097/PAP.0000000000000273>
- Pantanowitz L, Sinard JH, Henricks WH, Fatheree LA, Carter AB, Contis L, Beckwith BA, Evans AJ, Lal A, Parwani AV, College of American Pathologists P, Laboratory Quality C (2013) Validating whole slide imaging for diagnostic purposes in pathology: guideline from the College of American Pathologists Pathology and Laboratory Quality Center. *Arch Pathol Lab Med* 137(12):1710–1722. <https://doi.org/10.5858/arpa.2013-0093-CP>
- Rodrigues-Fernandes CI, Speight PM, Khurram SA, Araujo ALD, Perez D, Fonseca FP, Lopes MA, de Almeida OP, Vargas PA, Santos-Silva AR (2020) The use of digital microscopy as a teaching method for human pathology: a systematic review. *Virchows Archiv* 477(4):475–486. <https://doi.org/10.1007/s00428-020-02908-3>
- Zhao C, Wu T, Ding X, Parwani AV, Chen H, McHugh J, Piccoli A, Xie Q, Lauro GR, Feng X, Hartman DJ, Seethala RR, Wu S, Yousem S, Liang Y, Pantanowitz L (2015) International telepathology consultation: Three years of experience between the University of Pittsburgh Medical Center and KingMed Diagnostics in China. *J Pathol Inform* 6:63. <https://doi.org/10.4103/2153-3539.170650>
- Goacher E, Randell R, Williams B, Treanor D (2017) The diagnostic concordance of whole slide imaging and light microscopy: A systematic review. *Arch Pathol Lab Med* 141(1):151–161. <https://doi.org/10.5858/arpa.2016-0025-RA>
- Jones NC, Nazarian RM, Duncan LM, Kamionek M, Lauwers GY, Tambouret RH, Wu CL, Nielsen GP, Brachtel EF, Mark EJ, Sadow PM, Grabbe JP, Wilbur DC (2015) Interinstitutional whole slide imaging teleconsultation service development: assessment using internal training and clinical consultation cases. *Arch Pathol Lab Med* 139(5):627–635. <https://doi.org/10.5858/arpa.2014-0133-OA>
- Tabata K, Mori I, Sasaki T, Itoh T, Shiraishi T, Yoshimi N, Maeda I, Harada O, Taniyama K, Taniyama D, Watanabe M, Mikami Y, Sato S, Kashima Y, Fujimura S, Fukuoka J (2017) Whole-slide imaging at primary pathological diagnosis: Validation of whole-slide imaging-based primary pathological diagnosis at twelve Japanese academic institutes. *Pathol Int* 67(11):547–554. <https://doi.org/10.1111/pin.12590>
- Bauer TW, Schoenfeld L, Slaw RJ, Yerian L, Sun Z, Henricks WH (2013) Validation of whole slide imaging for primary diagnosis in surgical pathology. *Arch Pathol Lab Med* 137(4):518–524. <https://doi.org/10.5858/arpa.2011-0678-OA>
- Araujo ALD, Arboleda LPA, Palmier NR, Fonseca JM, de Pauli PM, Gomes-Silva W, Ribeiro ACP, Brandao TB, Simonato LE, Speight PM, Fonseca FP, Lopes MA, de Almeida OP, Vargas PA, Madrid Troconis CC, Santos-Silva AR (2019) The performance of digital microscopy for primary diagnosis in human pathology: a systematic review. *Virchows Archiv* 474(3):269–287. <https://doi.org/10.1007/s00428-018-02519-z>
- Girolami I, Pantanowitz L, Marletta S, Brunelli M, Mescoli C, Parisi A, Barresi V, Parwani A, Neil D, Scarpa A, Rossi ED, Eccher A (2020) Diagnostic concordance between whole slide imaging and conventional light microscopy in cytopathology: A systematic review. *Cancer Cytopathol* 128(1):17–28. <https://doi.org/10.1002/cncy.22195>
- Hanna MG, Reuter VE, Ardon O, Kim D, Sirintrapun SJ, Schuffler PJ, Busam KJ, Sauter JL, Brogi E, Tan LK, Xu B, Bale T, Agaram NP, Tang LH, Ellenson LH, Philip J, Corsale L, Stamelos E, Friedlander MA, Ntiamoah P, Labasin M, England C, Klimstra DS, Hameed M (2020) Validation of a digital pathology system including remote review during the COVID-19 pandemic. *Mod Pathol*. <https://doi.org/10.1038/s41379-020-0601-5>
- Browning L, Colling R, Rakha E, Rajpoot N, Rittscher J, James JA, Salto-Tellez M, Snead DRJ, Verrill C (2020) Digital pathology and artificial intelligence will be key to supporting clinical and academic cellular pathology through COVID-19 and future crises: the PathLAKE consortium perspective. *J Clin Pathol*. <https://doi.org/10.1136/jclinpath-2020-206854>
- Chong T, Palma-Diaz MF, Fisher C, Gui D, Ostrzega NL, Sempa G, Sisk AE, Valasek M, Wang BY, Zuckerman J, Khacharian C, Binder S, Wallace WD (2019) The California Telepathology Service: UCLA's Experience in Deploying a Regional Digital Pathology Subspecialty Consultation Network. *J Pathol Inform* 10:31. https://doi.org/10.4103/jpi.jpi_22_19
- Romero Lauro G, Cable W, Lesniak A, Tseytlin E, McHugh J, Parwani A, Pantanowitz L (2013) Digital pathology consultations—a new era in digital imaging, challenges and practical applications. *J Digit Imaging* 26(4):668–677. <https://doi.org/10.1007/s10278-013-9572-0>
- Sacco A, Esposito F, Marchetto G, Kolar G, Schwetye K (2020) On Edge Computing for Remote Pathology Consultations and Computations. *IEEE J Biomed Health Inform* 24(9):2523–2534. <https://doi.org/10.1109/JBHI.2020.3007661>
- Tetu B, Perron E, Louahlia S, Pare G, Trudel MC, Meyer J (2014) The Eastern Quebec Telepathology Network: a three-year experience of clinical diagnostic services. *Diagn Pathol* 9(Suppl 1):S1. <https://doi.org/10.1186/1746-1596-9-S1-S1>
- Amin A, DeLellis RA, Fava JL (2021) Modifying phrases in surgical pathology reports: introduction of Standardized Scheme of Reporting Certainty in Pathology Reports (SSRC-Path). *Virchows Archiv* 479(5):1021–1029. <https://doi.org/10.1007/s00428-021-03155-w>
- Azam M, Nakhleh RE (2002) Surgical pathology extradepartmental consultation practices. *Arch Pathol Lab Med* 126(4):405–412. [https://doi.org/10.1043/0003-9985\(2002\)126%3c0405:SPECP%3e2.0.CO;2](https://doi.org/10.1043/0003-9985(2002)126%3c0405:SPECP%3e2.0.CO;2)
- Robboy SJ, Gross D, Park JY, Kirtzie E, Crawford JM, Johnson RL, Cohen MB, Karcher DS, Hoffman RD 2nd, Smith AT, Black-Schaffer WS (2020) Reevaluation of the US Pathologist Workforce Size. *JAMA Netw Open* 3(7):e2010648. <https://doi.org/10.1001/jamanetworkopen.2020.10648>

23. Robboy SJ, Gupta S, Crawford JM, Cohen MB, Karcher DS, Leonard DG, Magnani B, Novis DA, Prystowsky MB, Powell SZ, Gross DJ, Black-Schaffer WS (2015) The Pathologist Workforce in the United States: II. An Interactive Modeling Tool for Analyzing Future Qualitative and Quantitative Staffing Demands for Services. *Arch Pathol Lab Med* 139(11):1413–1430. <https://doi.org/10.5858/arpa.2014-0559-OA>
24. Bauer TW, Slaw RJ (2014) Validating whole-slide imaging for consultation diagnoses in surgical pathology. *Arch Pathol Lab Med* 138(11):1459–1465. <https://doi.org/10.5858/arpa.2013-0541-OA>
25. Buck TP, Dilorio R, Havrilla L, O'Neill DG (2014) Validation of a whole slide imaging system for primary diagnosis in surgical pathology: A community hospital experience. *J Pathol Inform* 5(1):43. <https://doi.org/10.4103/2153-3539.145731>
26. Mukhopadhyay S, Feldman MD, Abels E, Ashfaq R, Beltaifa S, Cacciabeve NG, Cathro HP, Cheng L, Cooper K, Dickey GE, Gill RM, Heaton RP Jr, Kerstens R, Lindberg GM, Malhotra RK, Mandell JW, Manlucu ED, Mills AM, Mills SE, Moskaluk CA, Nelis M, Patil DT, Przybycin CG, Reynolds JP, Rubin BP, Saboorian MH, Salicru M, Samols MA, Sturgis CD, Turner KO, Wick MR, Yoon JY, Zhao P, Taylor CR (2018) Whole slide imaging versus microscopy for primary diagnosis in surgical pathology: A multicenter blinded randomized noninferiority study of 1992 cases (pivotal study). *Am J Surg Pathol* 42(1):39–52. <https://doi.org/10.1097/PAS.0000000000000948>
27. Sakamoto T, Furukawa T, Lami K, Pham HHN, Uegami W, Kuroda K, Kawai M, Sakanashi H, Cooper LAD, Bychkov A, Fukuoka J (2020) A narrative review of digital pathology and artificial intelligence: focusing on lung cancer. *Transl Lung Cancer Res* 9(5):2255–2276. <https://doi.org/10.21037/tlcr-20-591>
28. Fujisawa T, Mori K, Mikamo M, Ohno T, Kataoka K, Sugimoto C, Kitamura H, Enomoto N, Egashira R, Sumikawa H, Iwasawa T, Matsushita S, Sugiura H, Hashisako M, Tanaka T, Terasaki Y, Kunugi S, Kitani M, Okuda R, Horiike Y, Enomoto Y, Yasui H, Hozumi H, Suzuki Y, Nakamura Y, Fukuoka J, Johkoh T, Kondoh Y, Ogura T, Inoue Y, Hasegawa Y, Inase N, Homma S, Suda T (2019) Nationwide cloud-based integrated database of idiopathic interstitial pneumonias for multidisciplinary discussion. *Eur Respir J* 53(5):1802243. <https://doi.org/10.1183/13993003.02243-2018>
29. Woolgar JA, Triantafyllou A, Thompson LD, Hunt JL, Lewis JS Jr, Williams MD, Cardesa A, Rinaldo A, Barnes L, Slootweg PJ, Devaney KO, Gnepp DR, Westra WH, Ferlito A (2014) Double reporting and second opinion in head and neck pathology. *Eur Arch Otorhinolaryngol* 271(5):847–854. <https://doi.org/10.1007/s00405-014-2879-8>
30. Manion E, Cohen MB, Weydert J (2008) Mandatory second opinion in surgical pathology referral material: clinical consequences of major disagreements. *Am J Surg Pathol* 32(5):732–737. <https://doi.org/10.1097/PAS.0b013e31815a04f5>
31. Strosberg C, Gibbs J, Braswell D, Leslie RR, Messina J, Centeno BA, Coppola D (2018) Second opinion reviews for cancer diagnoses in anatomic pathology: A comprehensive cancer center's experience. *Anticancer Res* 38(5):2989–2994. <https://doi.org/10.21873/anticancer.12551>
32. Khazai L, Middleton LP, Goktepe N, Liu BT, Sahin AA (2015) Breast pathology second review identifies clinically significant discrepancies in over 10% of patients. *J Surg Oncol* 111(2):192–197. <https://doi.org/10.1002/jso.23788>

Publisher's note Springer Nature remains neutral with regard to jurisdictional claims in published maps and institutional affiliations.